

ZOMM SERIES

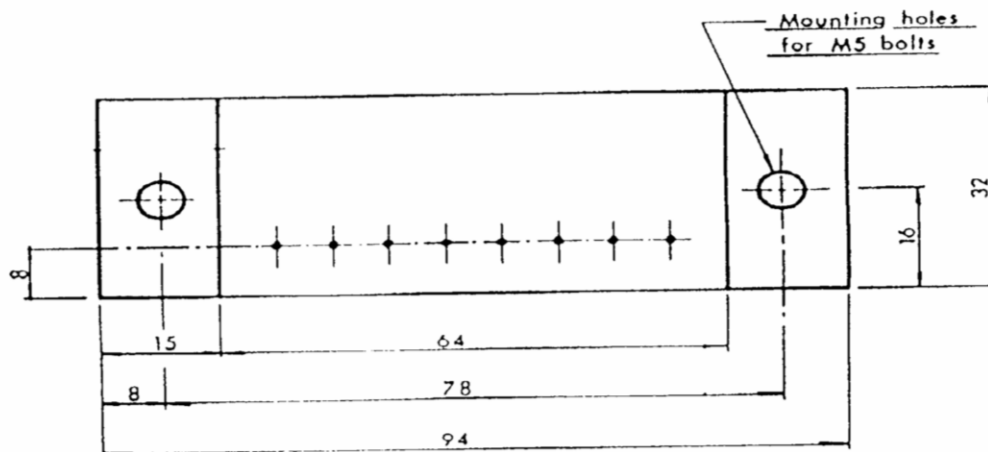
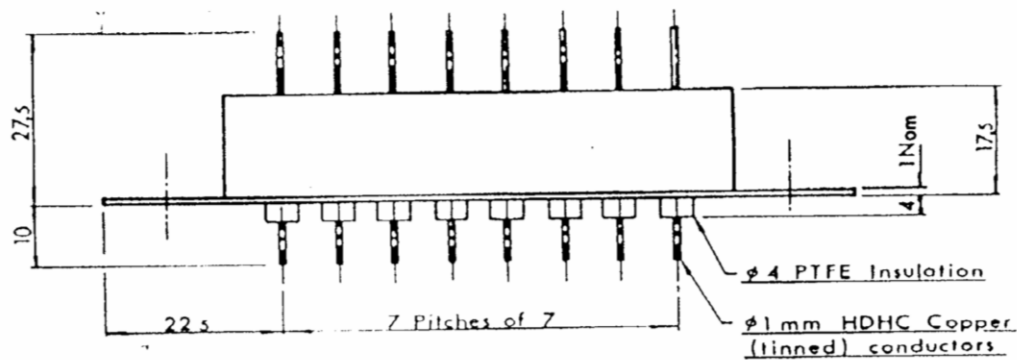
ZOMM 108 / (XXX) / 2 / 8

(XXX)		3L1	3L2	3L3	3L4	3L5	3L6	3L7	3L8	3L9	300	301	302	303	304
Continuous Operating Voltage	a.c. (rms)	10	13	14	17	20	25	30	35	43	52	75	95	110	120
	d.c.	12	16	18	22	26	31	38	45	55	66	95	125	143	156
Energy per channel (Joules) (10/1000µs)		3.5	4.0	4.0	5.0	6.0	7.0	8.5	10.0	13.0	14.0	21.0	29.0	35.0	37.0
Max. Peak Clamping Volts at	10A (8/20µs)	45	50	55	60	70	80	95	110	135	-	-	-	-	-
	50A (8/20µs)	-	-	-	-	-	-	-	-	-	150	205	250	310	-
	200A (8/20µs)	-	-	-	-	-	-	-	-	-	-	-	-	-	345

Characteristics:

No. of channels	8
50 Shot (4/20µs) Repetitive Duty	600A
Response Time	<10ns
Continuous Current per Channel	20A
Max. (8/20µs) Current per Channel	4500A
Leakage Current per Channel at Rated Voltage, d.c.	<100µA
Through Inductance	<10µH
Volts Drop	Negligible
Terminations	1mm H.D.H.C. Tinned Copper
Bushes	PTFE
Bushes	PTFE
Earth Connection	To Base Plate

ZOMM 108 / (XXX) / 2 / 8



Contacts

**PD Devices Ltd
Old Station Yard,
South Brent,
Devon,
TQ10 9AL, UK.**

**Telephone : +44 01364 649248
Facsimile : +44 01364 649250
E-mail Enquiries : enquiries@pddevices.co.uk
Web Site : www.pddevices.co.uk**

enquiries@pddevices.co.uk

www.pddevices.co.uk

+44 (0)1364 649248