

ZOMM SERIES

ZOMM 141 / (XXX) / 4 / 1

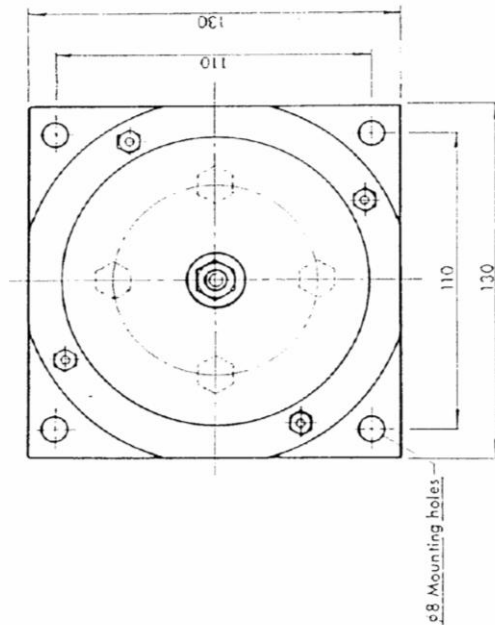
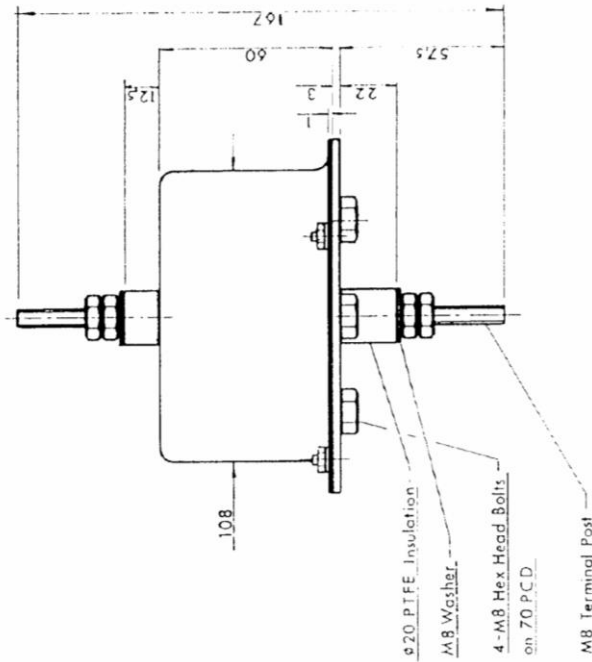
(XXX)	06	07	08	09	1	2	3	4	5	6	7	8
Continuous Operating Voltage : a.c. (rms)	50	60	95	110	120	135	150	180	220	250	280	320
Energy per channel (Joules) (10/1000µs)	125	150	250	325	380	400	500	520	640	700	800	920
Max. Peak Clamping Volts at 100A (8/20µs)	170	200	300	335	365	410	450	540	670	760	850	1000

(XXX)	9	10	11	11
Continuous Operating Voltage : a.c. (rms)	380	415	440	600
Energy per channel (Joules) (10/1000µs)	1040	1160	1280	1500
Max. Peak Clamping Volts at 100A (8/20µs)	1200	1300	1400	1900

Characteristics:

No. of channels	1
50 Shot (4/20µs) Repetitive Duty	5000A
Response Time	<10ns
Continuous Current per Channel	60A (Can be supplied as a special with 100A Copper conductors add Cu to part No.)
Max. (8/20µs) Current per Channel	30000A
Leakage Current per Channel at Rated Voltage, d.c.	<200µA
Through Inductance	<10µH
Volts Drop	Negligible
Terminations	8mm Brass
Bushes	PTFE
Earth Connection	To Base Plate
Recommended Torque per M8 Terminal	6.0Nm Brass, 5.6Nm Copper conductors (Ensure terminal does not rotate)

ZOMM 141 / (XXX) / 4 / 1



Contacts

PD Devices Ltd
Old Station Yard,
South Brent,
Devon,
TQ10 9AL, UK.

Telephone : +44 01364 649248
Facsimile : +44 01364 649250
E-mail Enquiries : enquiries@pddevices.co.uk
Web Site : www.pddevices.co.uk

enquiries@pddevices.co.uk

www.pddevices.co.uk

+44 (0)1364 649248